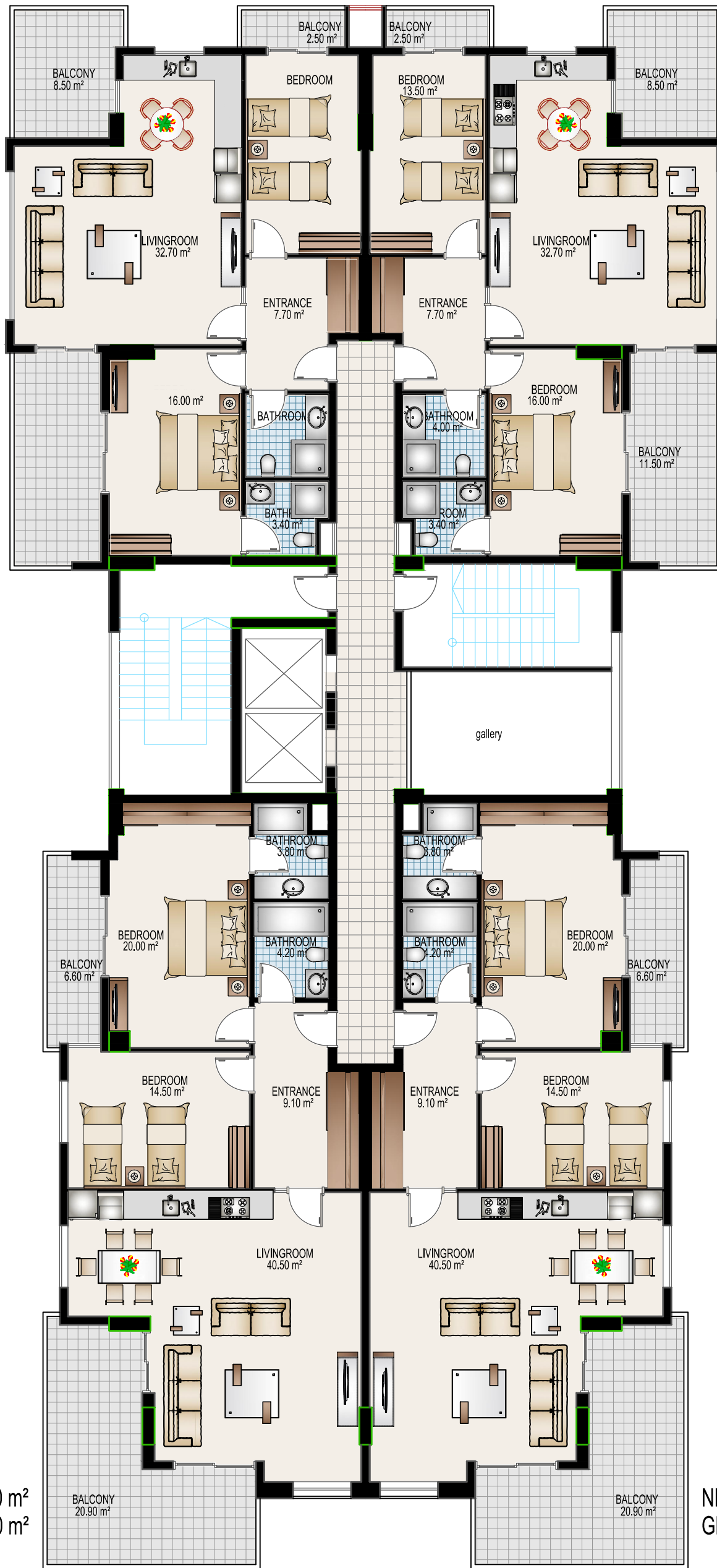


NET TOTAL : 99.80 m<sup>2</sup>  
GROSS TOTAL : 122.00 m<sup>2</sup>

NET TOTAL : 99.80 m<sup>2</sup>  
GROSS TOTAL : 122.00 m<sup>2</sup>



NET TOTAL : 119.60 m<sup>2</sup>  
GROSS TOTAL : 145.00 m<sup>2</sup>

NET TOTAL : 119.60 m<sup>2</sup>  
GROSS TOTAL : 145.00 m<sup>2</sup>

## NORMAL FLOOR PLAN